



*"Giving life to paper"  
"Kağıda hayat verir"*

**Oran-by**



# Oran-by



## Mission

In accordance with the needs and dynamics of our developing industry; We strive to provide high quality and reliable products which are compatible with the demands and expectations of our customers and increasing our customer's benefits with an understanding of ethical trade and social responsibility that contribute to the environment, health, safety, and employment.

## Misyon

Gelişmekte olan ülkemizin ihtiyaçlarına ve dinamiklerine uygun; çevreye, sağlığa, güvenliğe ve istihdama katkı sağlayan, etik ticareti, sosyal sorumluluğu kendisine ilke edinen bir anlayışla müşterilerimizin talep ve beklentilerine uygun kaliteli ve güvenilir ürünler sunmak ve milli gelire katkıda bulunmak için çalışıyoruz.

## Our Values



Being customer oriented

*Müşteri odaklı olmak*



Believe in teamwork

*Takım çalışmasına inanmak*



Give importance to the environment, health, safety and education

*Çevre, sağlık, güvenlik ve eğitime önem vermek*



Believing in ethical trade

*Etik ticaret olgusuna inanmak*



Being honest and reliable

*Dürüst ve güvenilir olmak*



Being innovative

*Yenilikçi olmak*



Always aim for the highest quality

*Daima en yüksek kaliteyi hedeflemek*



Creating more value

*Etik ticaret olgusuna inanmak*

# Oran-by



## Vision

Avasar Printing which adopts total quality philosophy, aims to ensure sustainability and to make a difference in the packaging industry. Our company aims to provide unconditional customer satisfaction, strives to be a pioneer in terms of quality and cost.

## Vizyon

*Toplam kalite felsefesini benimseyen Avasar Basım sürekliliği sağlamayı ve ambalaj sektöründe fark yaratmayı hedeflemektedir. Koşulsuz müşteri memnuniyeti sağlamayı amaçlayan firmamız, kalite ve maliyet açısından öncü olmak için çalışmaktadır.*

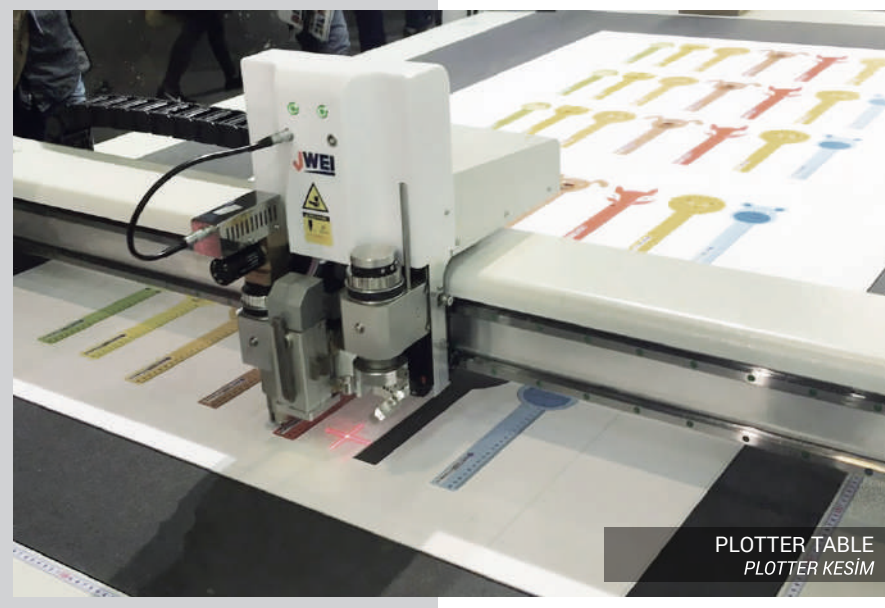


# CAD / CAM UNIT

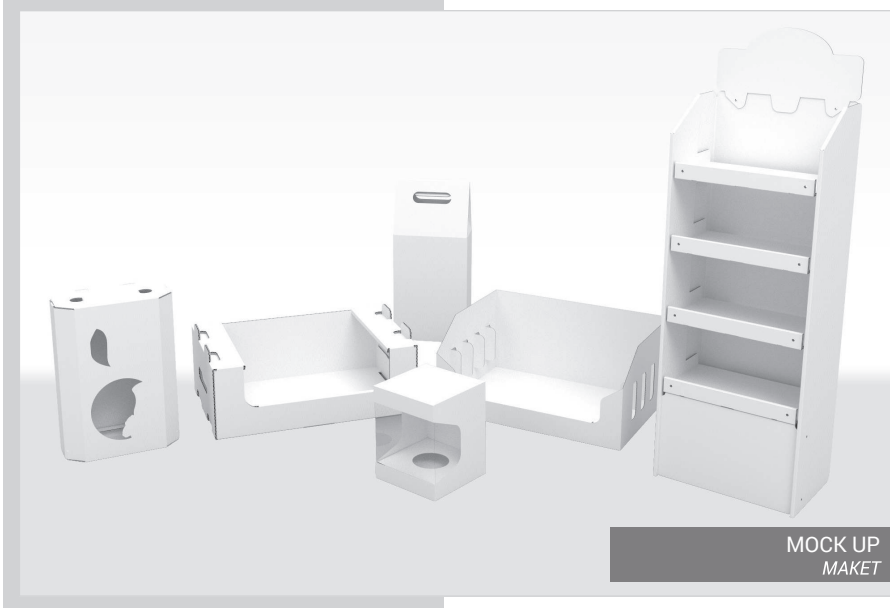
Packaging R&D,  
Prototyping and mock up

*CAD - Bilgisayar Destekli Tasarım ve Prototip Bölümü*

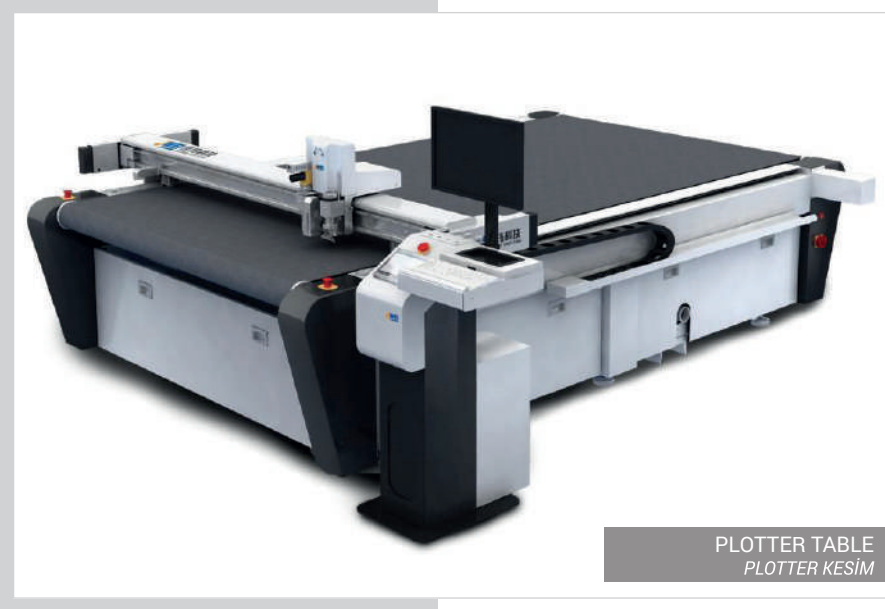
# Oran-by



PLOTTER TABLE  
PLOTTER KESİM



MOCK UP  
MAKET



PLOTTER TABLE  
PLOTTER KESİM



PLOTTER TABLE  
PLOTTER KESİM



# GRAPHIC DESIGN & PRE-PRESS

*Grafik Tasarım & Baskı Öncesi Hazırlık Bölümü*



# Oran-by



GRAPHIC DESIGN  
GRAFİK TASARIM



PHOTOGRAPHY  
FOTOĞRAF ÇEKİMİ



LIGHT CABIN  
IŞIK KABİNİ



PRINT PROOF CROMALIN  
KROMOLİN BASKI



# REEL SHEETER UNIT

*Karton Bobin Ebatlama Bölümü*





# Oran-by



REEL SHEETER - 1  
BOBİN EBATLAMA - 1



REEL SHEETER - 2  
BOBİN EBATLAMA - 2



REEL SHEETERS  
BOBİN EBATLAMA MAKİNELERİ



A large industrial printing plant with various machines and workers. The scene is filled with complex machinery, including a KBA litho press and a UV varnish unit. Workers in blue uniforms and hairnets are visible, operating the equipment. The floor is red, and there are safety railings and stairs. A blue diagonal line runs across the image.

# LITHO / OFFSET PRINTING WITH UV VARNISH UNIT

*Ofset Baskı Bölümü*

# Oran-by



5+1 OFFSET PRESS  
5+1 OFSET BASKI



6+2 OFFSET PRESS  
6+2 OFSET BASKI



5+1 OFFSET PRESS  
5+1 OFSET BASKI



6+2 OFFSET PRESS  
6+2 OFSET BASKI



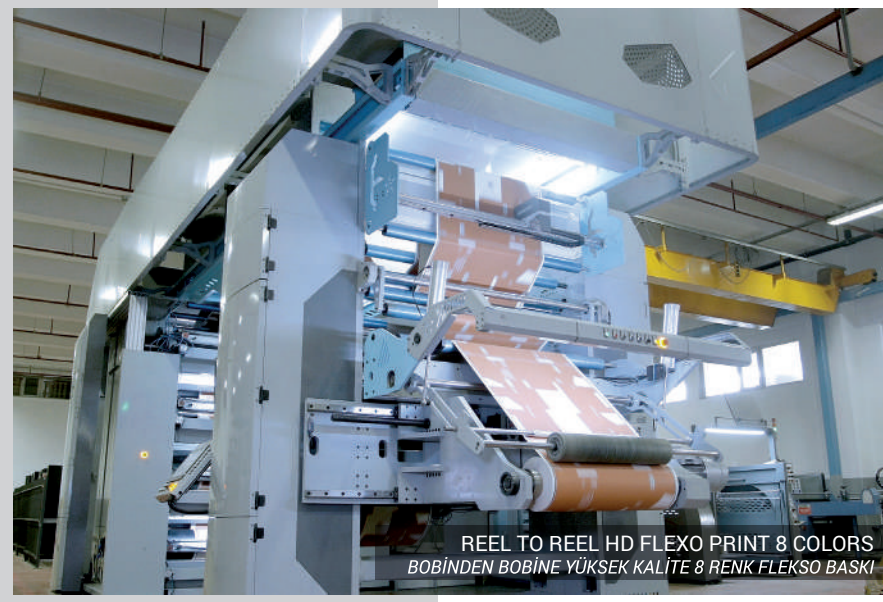
# HIGH-DEFINITION FLEXO PREPRINT UNIT

Large size **8 colours** Flexo Printer

*Büyük ebat 8 renkli flekso baskı makinesi*



# Oran-by



REEL TO REEL HD FLEKO PRINT 8 COLORS  
BOBİNDEN BOBİNE YÜKSEK KALİTE 8 RENK FLEKSO BASKI



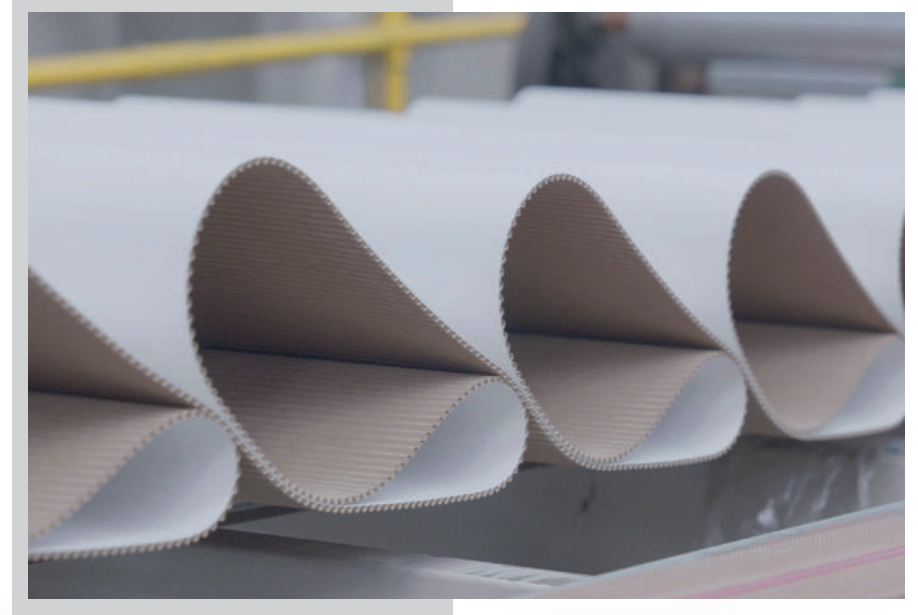
REEL TO REEL HD FLEKO PRINT 8 COLORS  
BOBİNDEN BOBİNE YÜKSEK KALİTE 8 RENK FLEKSO BASKI



# CORRUGATED BOARD PRODUCTION UNIT

*Oluklu Mukavva Üretim Bölümü*

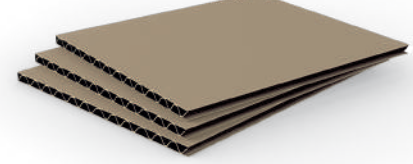
# Oran-by



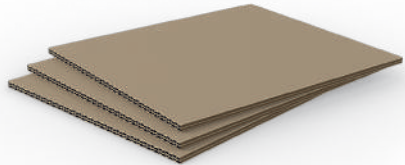
E flute single wall  
*E dalga oluklu mukavva*



B flute single wall  
*B dalga oluklu mukavva*



C flute single wall  
*C dalga oluklu mukavva*



EE flute duple wall  
*EE dalga dopel*



EB flute duple wall  
*EB dalga dopel*



BC flute duple wall  
*BC dalga dopel*





# FILM LAMINATION WINDOW PATCHING & HOT FOIL UNITS

*Selefon Laminasyon, Pencere Yapıştırma & Varak Bölümü*



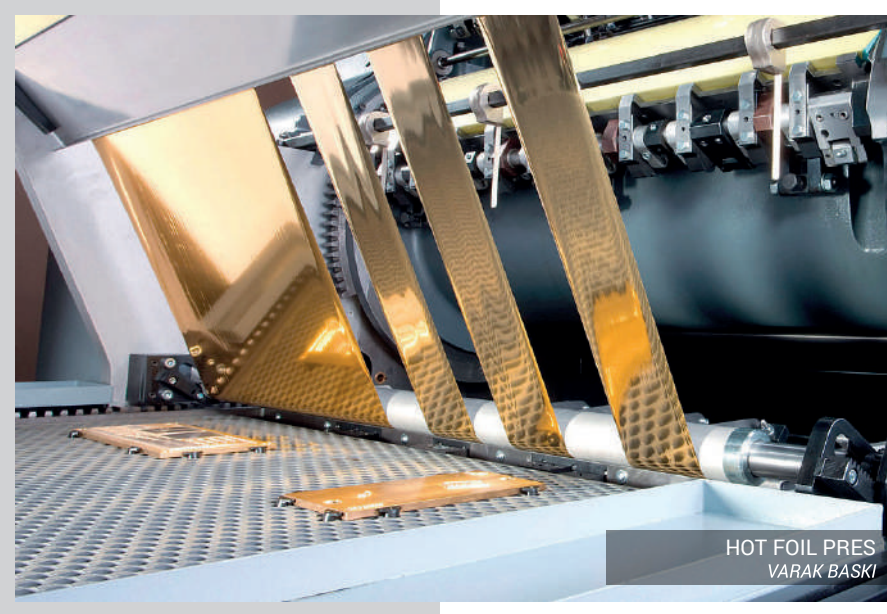
# Oran-by



FILM LAMINATION - 1  
SELEFON LAMINASYON - 1



FILM LAMINATION - 2  
SELEFON LAMINASYON - 2



HOT FOIL PRES  
VARAK BASKI



WINDOW PATCHING  
PENCERE YAPIŞTIRMA



# CARTON TO ONDULINE LAMINATING UNIT

*Karton - Ondüle Sivama Bölümü*

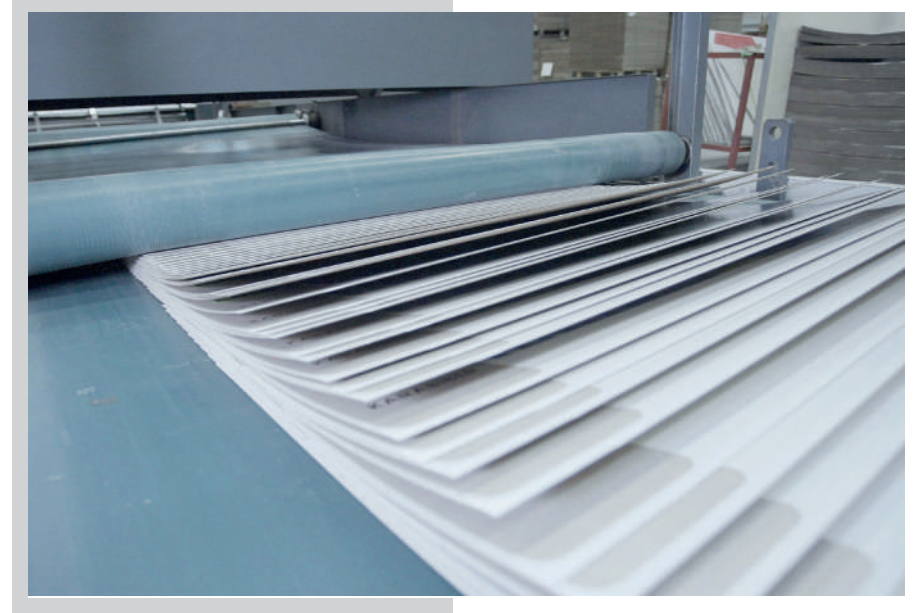
# Oran-by



CARTON LAMINATION - 1  
KARTON SIVAMA - 1



CARTON LAMINATION - 2  
KARTON SIVAMA - 2



# DIE-CUTTING UNIT

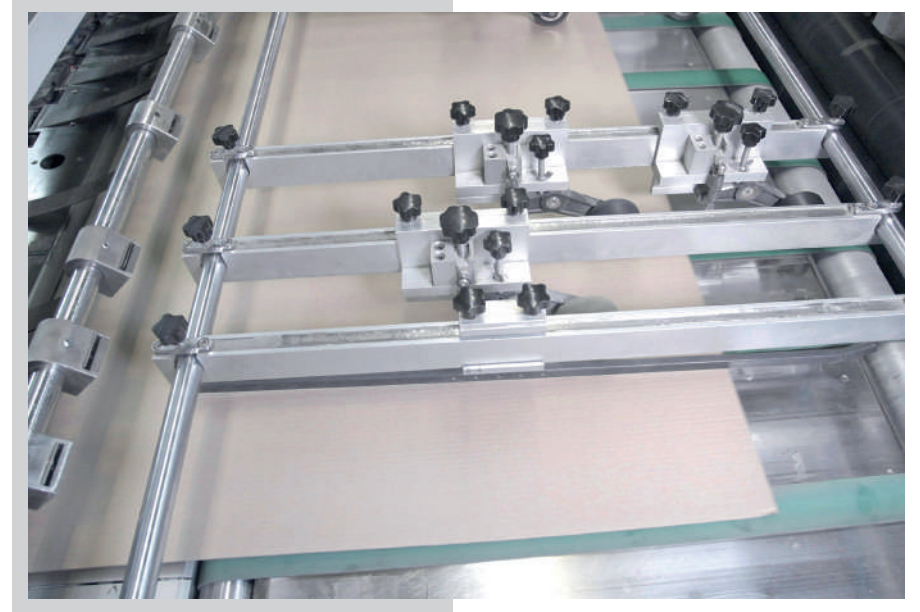
*Şekilli Kesim Bölümü*



# Oran-by



7 DIFFERENT SIZE DIE-CUT MACHINES  
KESİM PARKURU



# FOLDING & GLUING UNIT

*Katlama ve Yapıştırma Bölümü*



# Oran-by



4 DIFFERENT SIZE FOLDING&GLUING MACHINES  
YAPIŞTIRMA PARKURU



The image shows a complex industrial packing and forwarding system. A yellow overhead crane with a black and yellow striped safety bar is positioned above a conveyor belt. The conveyor belt is made of metal rollers and is moving a large, wrapped pallet. The background shows a warehouse with high ceilings and various pieces of machinery. A blue diagonal line is overlaid on the image, separating the top and bottom sections.

# PACKING and FORWARDING

*Paketleme ve Sevkiyat*



Oran-by



FORWARDING AREA  
SEVKİYAT ALANI



AUTOMATIC PALLETING ROBOT  
OTOMATİK STREÇ VE PALETTELEME



# FOOD Packaging Gıda Ambalajları

We use edible inks and preservatives of vegetable origin, odorless, non-allergen in our company, which has the authority and capacity to produce cardboard packages that will come into direct or indirect contact with food. We use ISEGA certified cartons for food packaging.

Gıda ile direkt veya endirekt temas edecek karton ambalajları üretebilmeye yetki ve kapasitesine sahip şirketimizde, bitkisel kökenli, kokusuz, allergen olmayan mürekkep ve koruyucular kullanılmaktadır. Gıda ambalajlarında ISEGA sertifikalı kartonlar kullanılmaktadır.





# CHOCOLATE & Confectioneries

## Çikolata & Şekerleme Ambalajları

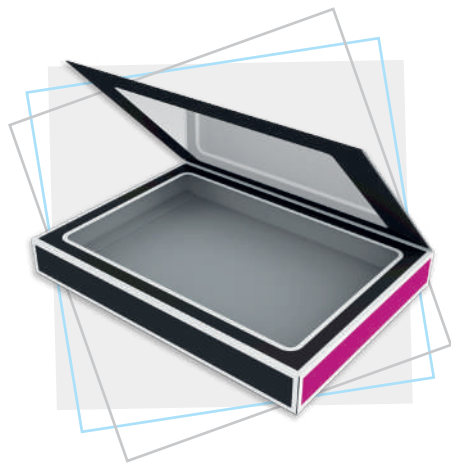
Chocolate is happiness, expression of emotions, a reward.

We offer you to provide your customers, products that make them feel special. We develop very prestigious, luxurious packaging series to the international food manufacturers and chain markets like Tesco, Morrison's, Waitrose, Aldi and LIDL every year.

Çikolata mutluluktur, duyguların ifadesidir, ödüldür.

Müşterilerinize ürünleriniz kendilerini özel hissettirecek ambalajlarda sunmanızı sağlıyoruz. Uluslararası gıda üreticilerine ve zincir marketlere her yıl çok prestijli, lux ambalaj serileri geliştireyoruz.





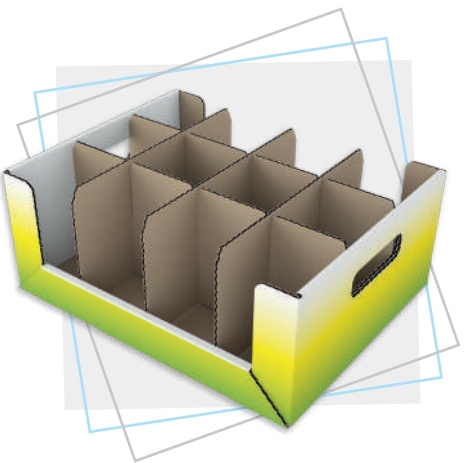
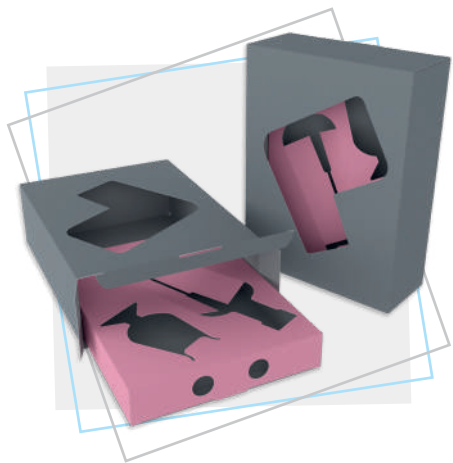
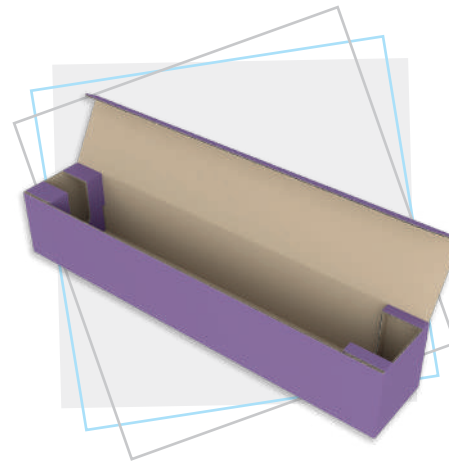
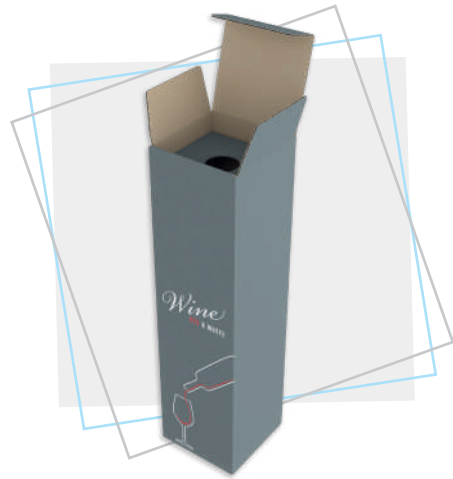
# BEVERAGE Packaging

## *İçecek Ambalajları*

We produce packagings for alcoholic and non-alcoholic beverage bottles, aluminum cans, cups, accessories like openers and packages in order to protect the product in the best way during the shipment. We apply special printing techniques to different types of cardboard to reflect the quality of your products.

*Alkollü ve alkolsüz içecek gurupları için şişe, alüminyum kutu, bardak, açacak gibi ürünlerin kutularını ve aynı zamanda sevkiyat sırasında bu ürünleri en iyi şekilde koruyacak ambalajları üretiyoruz. Ürünlerinizin kalitesini yansıtmak için çeşitli karton tiplerine göre özel baskı teknikleri uyguluyoruz.*





# MEDICAL Packaging

## Tıbbi Ambalajlar

serves its customers in the medical sector with its packaging that harmless to human health and reflects its product characteristics and quality.

medikal sektöründe insan sağlığına değer veren, ürün özelliklerini ve kalitesini yansıtan ambalajlar ile müşterilerine hizmet vermektedir.







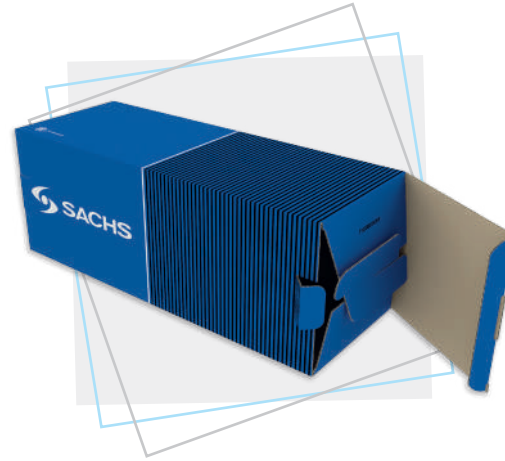
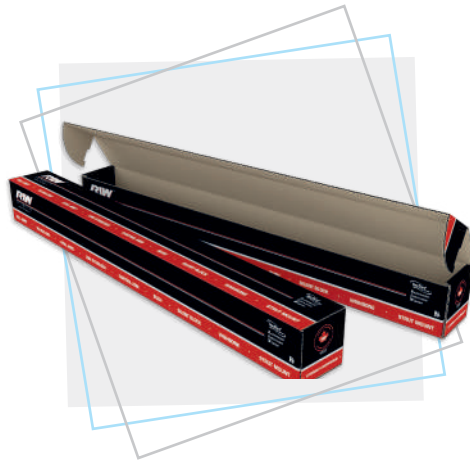
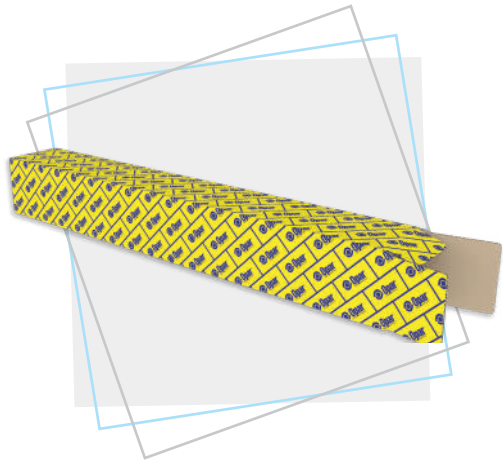
# AUTOMOTIVE Parts Packaging

## Otomotiv Ambalajları

We produce packages suitable for the specifications of the products, ranging from 100 grams windscreens wipers to 50 kilograms truck clutch lining used in the automotive sector. We are so assertive that we export our boxes to automotive manufacturers in Europe. We are preferred with our solutions such as JIT (Just In Time), CS (Consignee sales), Fixed price and storage in the user's factory or in a close area.

Otomotiv sektöründe kullanılan 100 gramlık cam sileceğinden, 50 kiloluk kamyon debriyaj balatasına kadar çeşitli parçalara ürünlerin özelliğine uygun ambalajlar üretiyoruz. Bu konuda o kadar iddialıyız ki Avrupa daki otomotiv üreticilerine kutularımızı ihraç ediyoruz. JIT (Just In Time), CS (Consignee sales), Sabit fiyat ve kullanıcının fabrikasında veya yakın çevresinde depolama gibi çözümlerimizle tercih ediliyoruz.





# ELECTRIC & Electronics Packaging

## Elektrik & Elektronik Ambalajları

Avasar printing provides its customers with high-quality packaging in a short leading time with the best solutions. Our company produces packages that adding value to the product in the electrical & electronic market and offers a wide range of products to its customers with many printing, cutting and laminating techniques.

Avasar basım ihtiyaca yönelik ürettiği çözümlerle müşterilerine kısa sürede kaliteli ambalaj tedariki sağlamaktadır. Elektrik & Elektronik pazarında ürüne değer katan ambalajlar üreten firmamız, birçok basım, kesim ve laminasyon tekniğiyle müşterilerine geniş bir ürün yelpazesi sunmaktadır.





# INDUSTRIAL Products Packaging

*Endüstriyel Ürünlerin Ambalajları*

Packon has the capacity to provide services for all kinds of products regardless of the volume of the product to be packed, serves to the industries such as construction-kitchen and bathroom with different and needs-oriented packages. We test the accuracy of the packaging for our products with our material endurance testers (BCT).

*Paketlenecek ürünün hacmi farketmeksizin her türlü ürüne yönelik hizmet sunma kapasitesine sahip firmamız, inşaat-mutfak-banyo gibi sektörlere de farklı ve ihtiyaca yönelik ambalaj çeşitleri ile hizmet vermektedir. Malzeme dayanıklılık (BCT) test cihazlarımız ile ürün için ambalajın doğruluğunu test ediyoruz.*





# STATIONARY & Toy Packaging

## Kırtasiye & Oyuncuk Ambalajları

We protect both the health of your children and your products. We select the inks and preservatives we use from odorless, non-allergenic plant origin. We know customer's behaviors and develop the most appealing packaging for making easy to make customer choose your brand on the market shelves.

Hem çocuklarınızın sağlığını hem de ürünlerinizi koruyoruz. Kullandığımız mürekkep ve koruyucuları kokusuz, allerjen olmayan bitkisel kaynaklı olanlardan seçiyoruz. Müşteri davranışını iyi biliyor ve market raflarında sizin markanızın seçilmesi için en albenili ambalajları geliştiriyoruz.







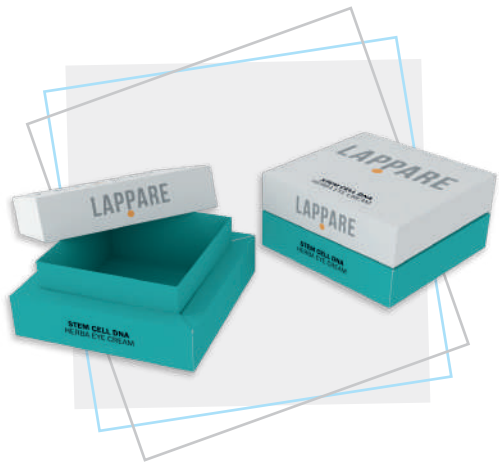
# COSMETIC Packaging

## Kozmetik Ambalajları

The final consumer in the cosmetics sector is very selective. We develop and produce packages that will attract the attention of the buyer, reflect your high quality and ensure the selection of your product. We surprise and pamper them with very special printing techniques and unprecedented box designs.

*Kozmetik sektöründeki nihai tüketici çok seçicidir. Alıcının dikkatini çekecek, yüksek kalitenizi yansıtacak, sizin ürününüzün seçilmesini sağlayacak ambalajları geliştiriyor ve üretiyoruz. Çok özel baskı teknikleri ve görülmemiş kutu dizaynları ile onları şaşırtıyor, şımartıyoruz.*



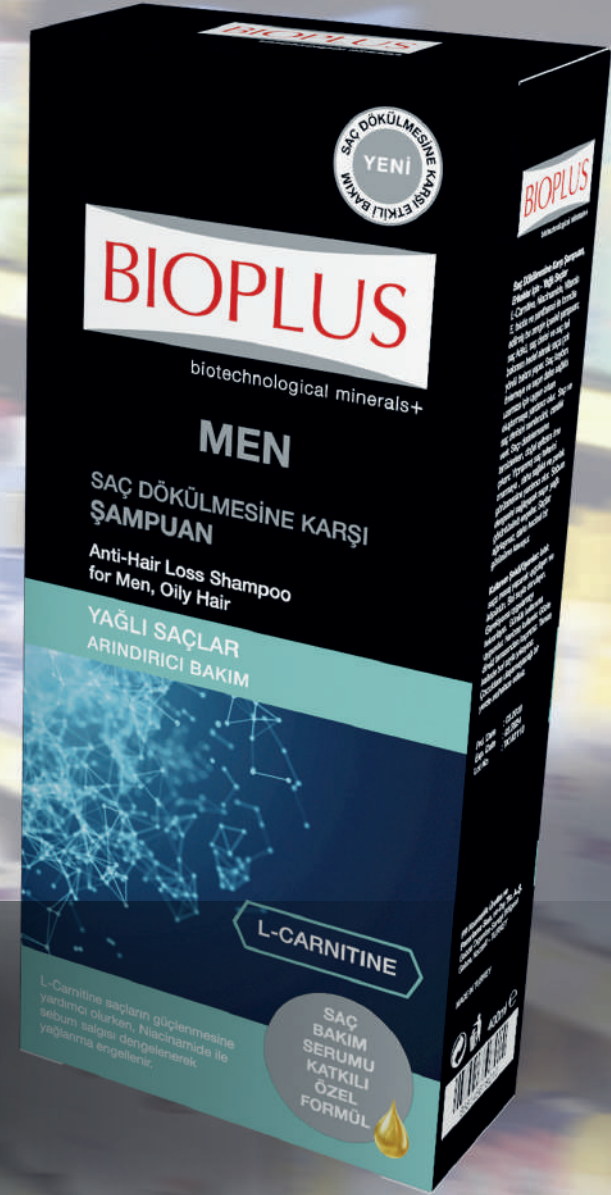


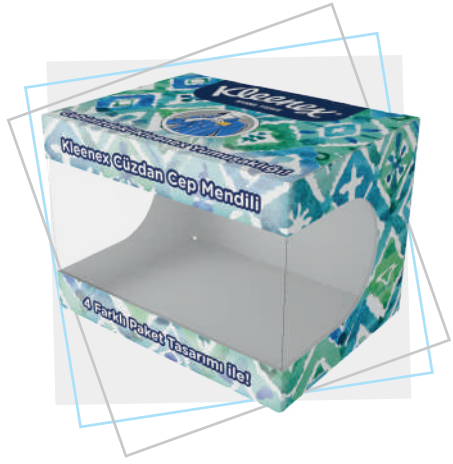
# PERSONAL Care Packaging

## Kişisel Bakım Ambalajları

The buyers of this sector are very much affected by the allure of the packaging, similar to the buyers of cosmetic products. We produce the most beautiful box for you at the most cost effective way.

*Bu sektörün alıcıları kozmetik ürünleri alıcılarına benzer şekilde ambalajın albenisinden çok etkilenirler. Sizin için en güzel kutuyu en uygun maliyetle üretiliyoruz.*





# KITCHENWARE Packaging

## Mutfak Gereçleri Ambalajları

The packaging of kitchen utensils should protect the product and attract the customers.

We produce packages that will protect your product as needed and appeal very nice to the end users.

Mutfak gereçlerinin ambalajları hem ürünü korumalı, hem de ev hanımlarını cezbetmelidir.

Ürününüzü gerektiği gibi koruyacak ve bayanların göz zevkine hitap eden ambalajlar üretiyoruz.





# CONSTRUCTION & Materials Packaging

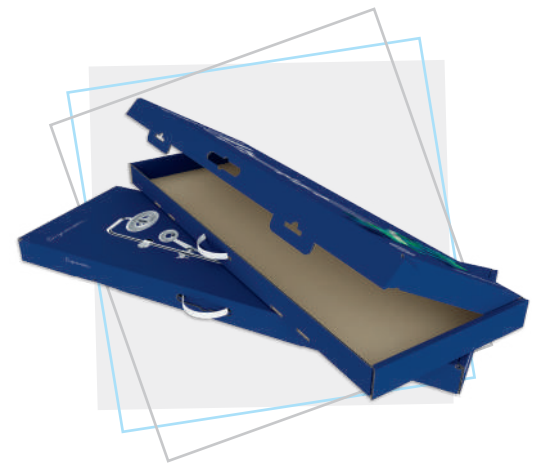
## İnşaat Malzemeleri Ambalajları

From door locks, to bathroom accessories, washbasin to ceramic tiles, we produce your packages that will protect your products and reflect your quality.

*Kapı kilidinden, banyo aksesuarlarına, lavabodan seramik fayanslara kadar hem ürünü koruyacak hem de kalitenizi yansıtacak ambalajlarınızı üretiyoruz.*







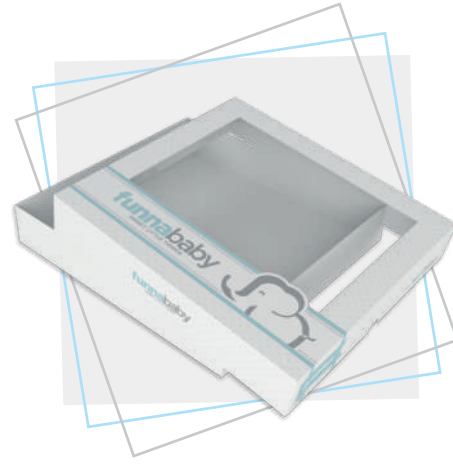
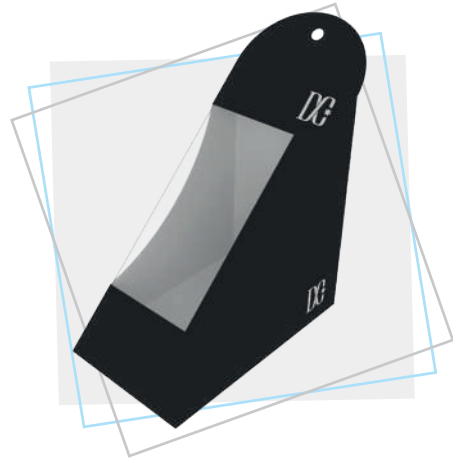
# TEXTILE Packaging

## Tekstil Ambalajları

Textile is fashion. The buyer expects continuous innovation in product and packaging. They want to see, touch and feel. We produce trendy packages that will reflect the quality of your product.

Tekstil modadır. Alıcı üründe ve ambalajda sürekli yenilik bekler. Görmek, dokunmak hissetmek ister. Ürününüzün kalitesini yansıtacağınız zevkli ambalajlar üretiyoruz.





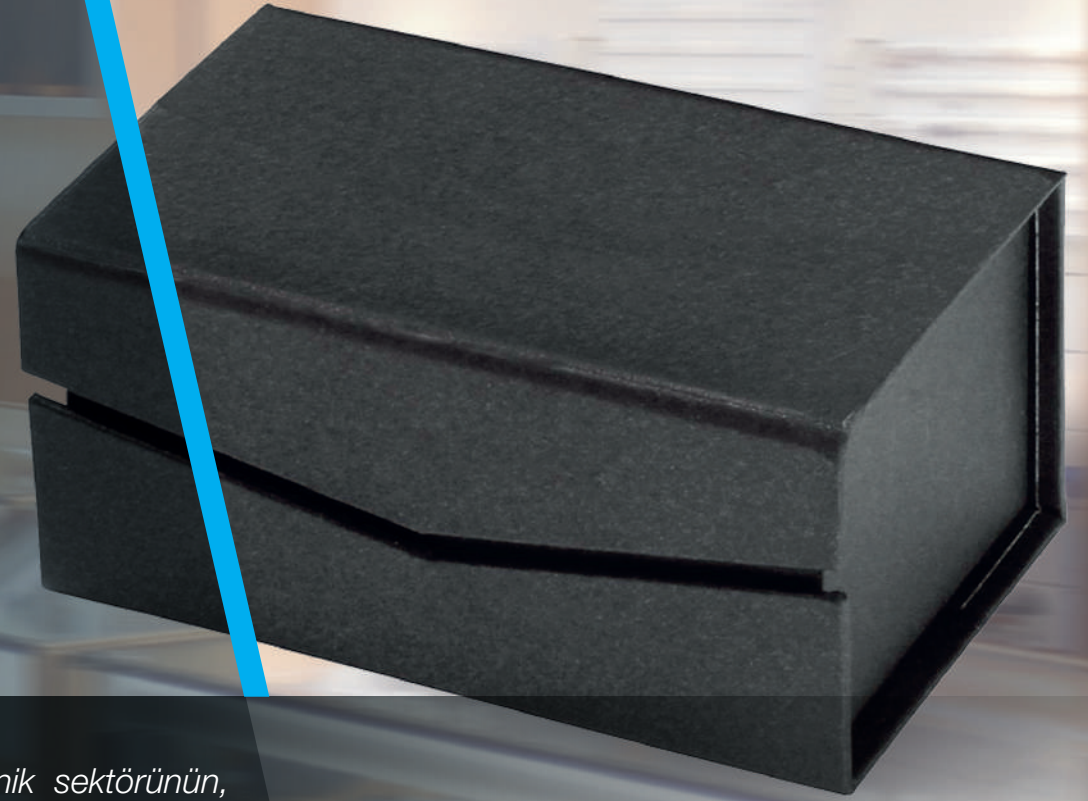
# RIGID Boxes

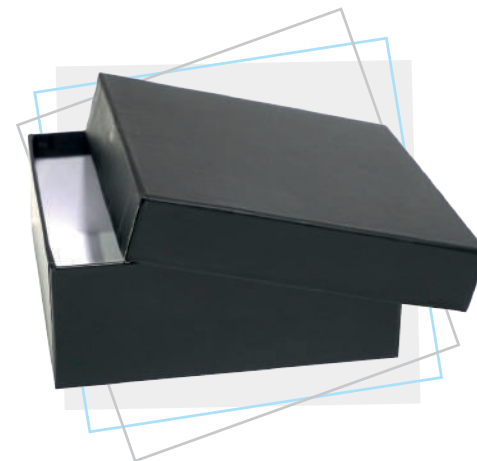
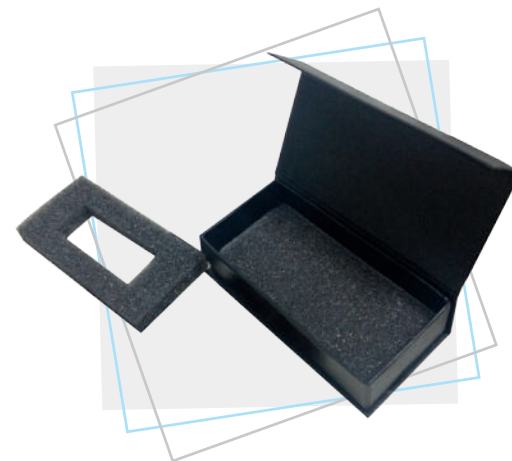
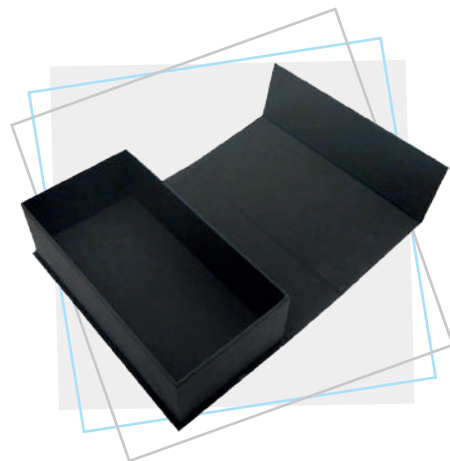
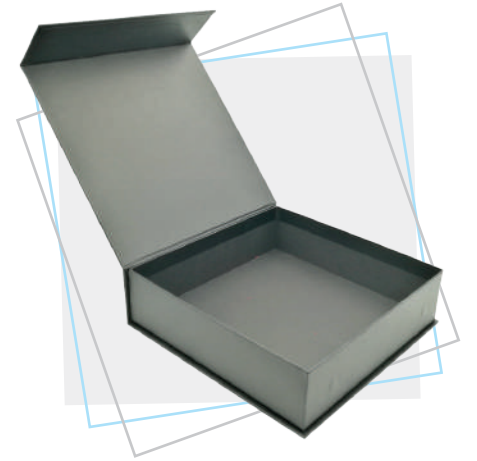
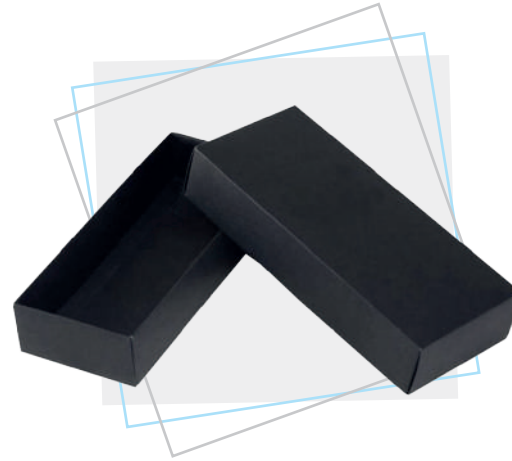
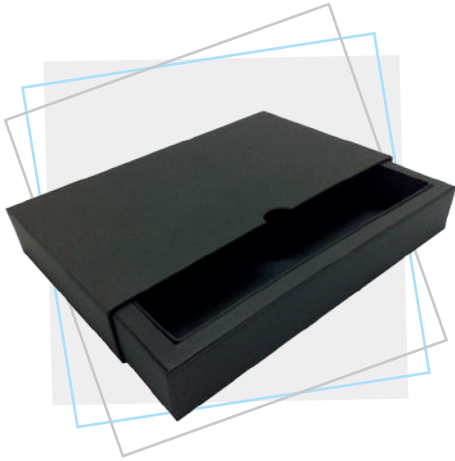
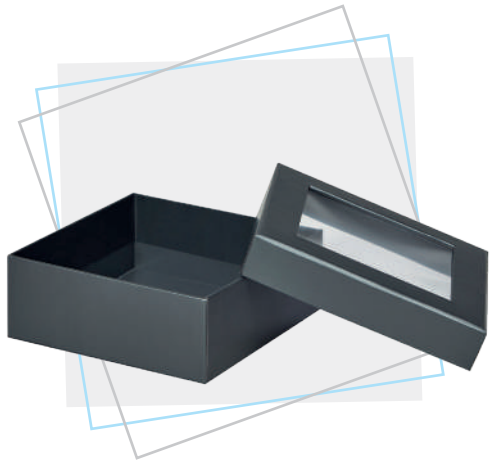
## Taslamalı Kutular

It is an indispensable package of cosmetics and electronics sector that provides elegant presentation. Should we make your customers feel that they are privileged with magnet lid or telescopic boxes with design and special materials suitable for your products?

*Kozmetik ve elektronik sektörünün, şık sunum sağlayan vazgeçilmez ambalajdır.*

*Ürünüze uygun dizayn ve özel malzemelerle mıknatıslı kapak veya teleskopik kutularla, müşterilerinize ayrıcalıklı olduklarını hissettirelim mi?*





# SRP DISPLAY

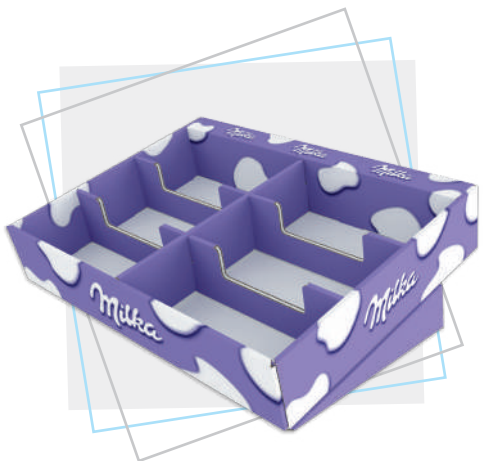
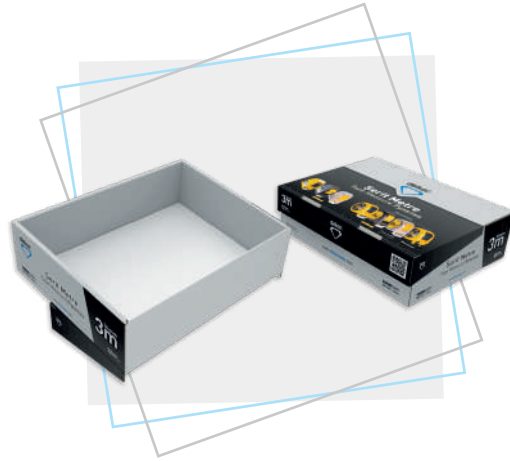
(Shelf Ready Packaging)

## Masa Üstü Standlar

It is the biggest visual advertising tool that will attract the attention of the customers in the markets in order to protect and exhibit your products. We will develop the best SRPs for you.

Marketlerde müşterinin dikkatini çekecek, ürünlerinizi hem koruyan hem sergileyen en büyük görsel reklam aracı. Sizin için en güzelini geliştireceğiz.





# PACKAGING

by Purpose &  
**FSDU**  
(Free Standing Display Units)

*Kullanım Amaçlarına göre Ambalajlar  
& Ayaklı Standlar*

It is the biggest visual advertising tool that will attract the attention of the customers in the markets in order to protect and exhibit your products. We will develop the best FSDU for you.

*Marketlerde müşterinin dikkatini çekecek, ürünlerinizi hem koruyan hem sergileyen en büyük görsel reklam aracı. Sizin için en güzelini geliştireceğiz.*







# ECMA & FEFCO

## *Uluslararası kutu modelleri*

It is the common language of packaging manufacturers and users in all over of the world. We can see thousands of box models together with international FEFCO and ECMA standard codes and develop new packaging ideas that can fit your product with you.

You can reach the **FEFCO** and **ECMA** catalogs from the link below by scanning the QR code.

*Dünyadaki ambalaj üretici ve kullanıcılarının ortak dilidir. Uluslararası FEFCO ve ECMA standart kodları ile binlerce kutu modelini bir arada görebilir, ürününüze uyabilecek yeni ambalaj fikirlerini sizinle birlikte geliştirebiliriz.*

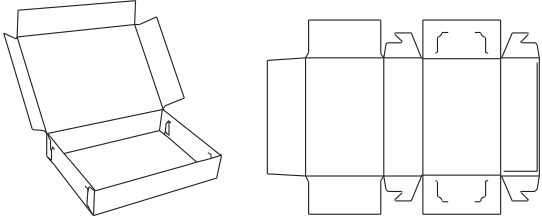
**FEFCO** ve **ECMA** kataloglarına **aşağıdaki linkimizden ve kare kodundan ulaşabilirsiniz.**



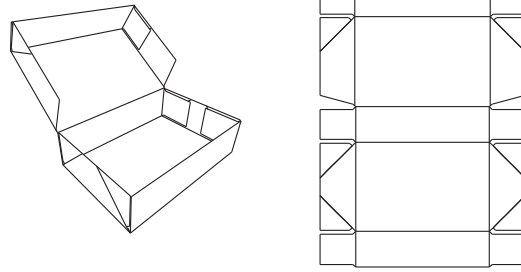
Food boxes are used to keep and carry food products safely and easily.

Gıda kutuları, farklı gıda ürünlerinin rahatça saklanması ve taşınması için kullanılan kutulardır.

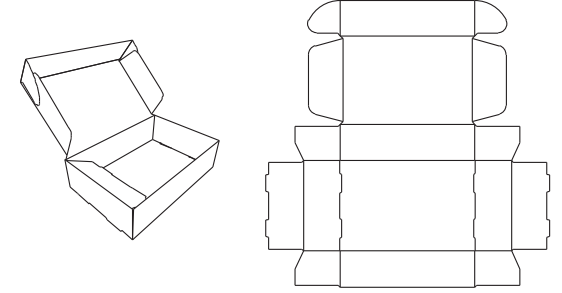
ECMA B3353



ECMA B6020



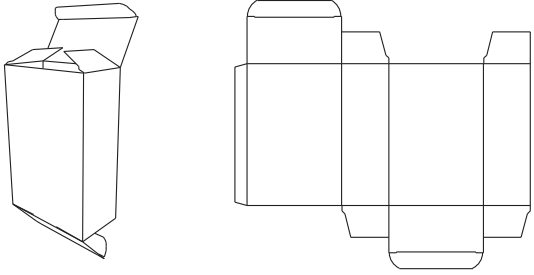
ECMA B2150



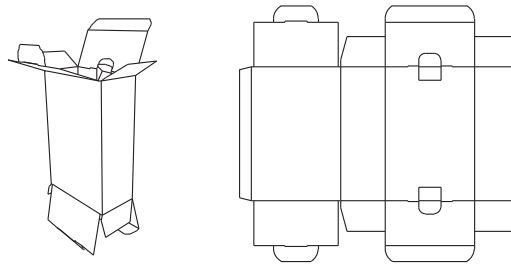
Tuck end box is the box model which enables to open and close easily and smoothly because it has double flaps.

İlaç tipi kutu, çift kapaklı olması nedeniyle rahat ve kolay açılıp kapanma olanağı sunan kutu modelidir.

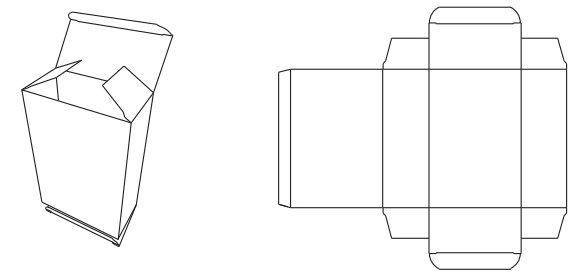
ECMA A2120



ECMA A9898



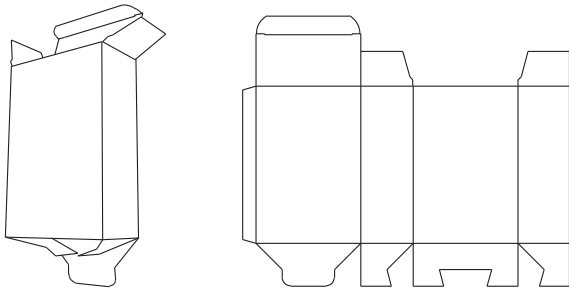
ECMA A2420



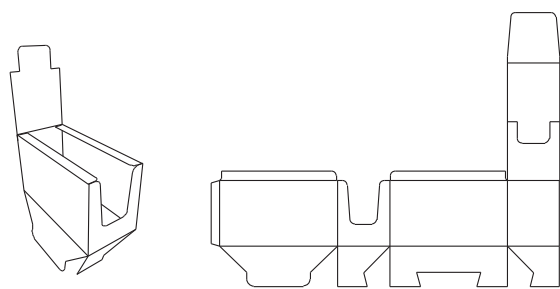
Snap lock box is the box model with lock system to set up manually.

Dip kilit kutu, manuel (elle) kurulumu yapılan kilit sistemli kutu modelidir.

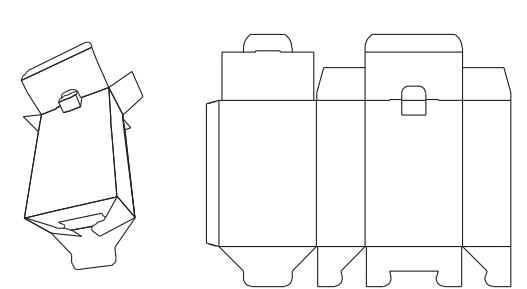
ECMA A5520



ECMA FC0603

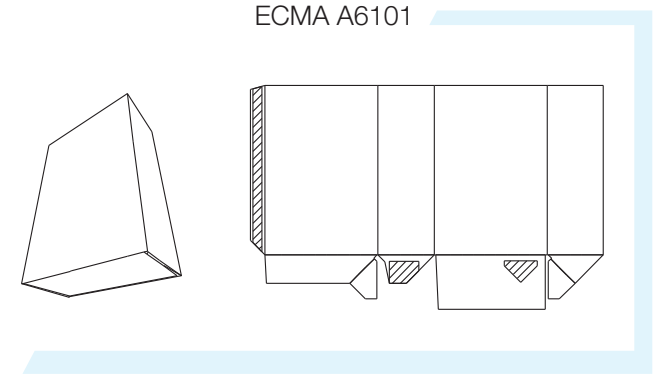
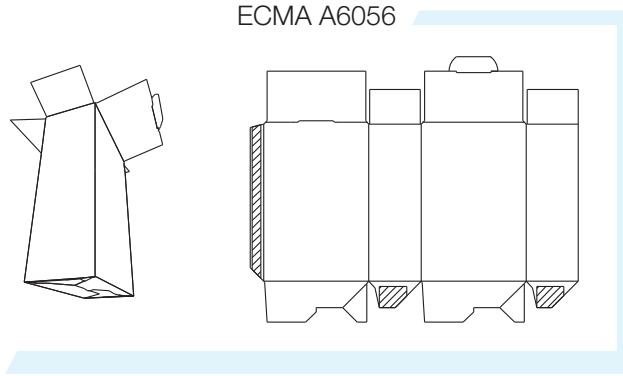
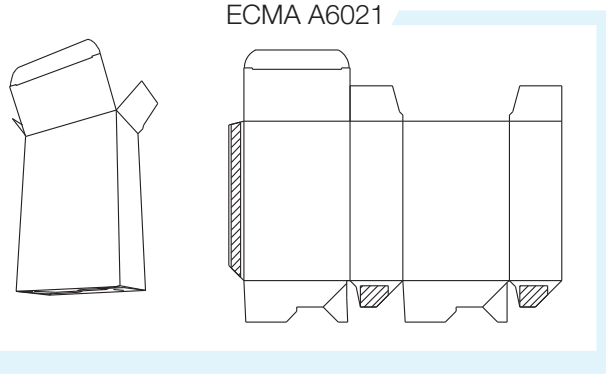


ECMA A5598



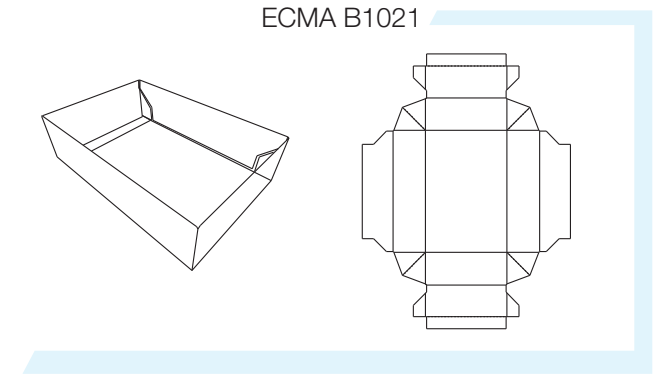
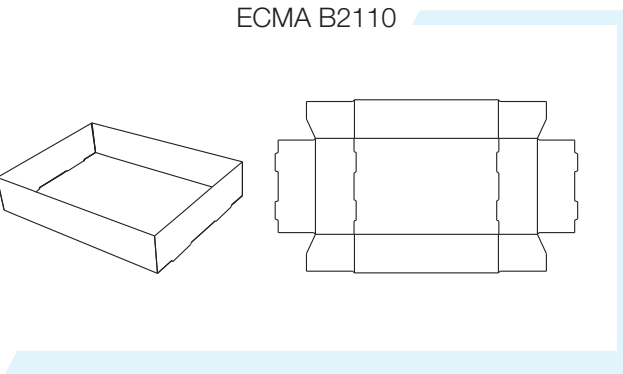
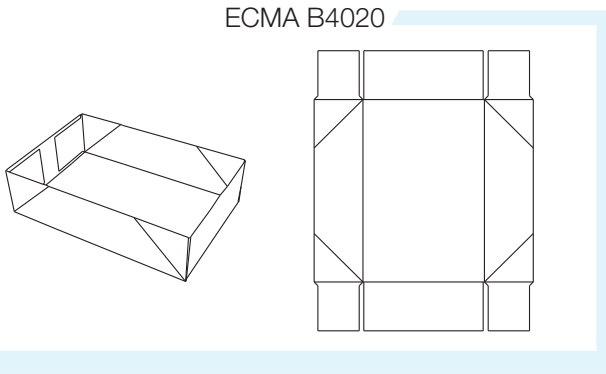
Tuck top auto bottom box is delivered to the customer the way that bottom end is glued and folded. It is already setup and ready to use when unfolded.

*Dip kilit yapıştırırmalı kutu, tabanı yapıştırılmış ve katlanmış şekilde kullanıcıya ulaşan ve açıldığında otomatik olarak kurulan kutu modelidir.*



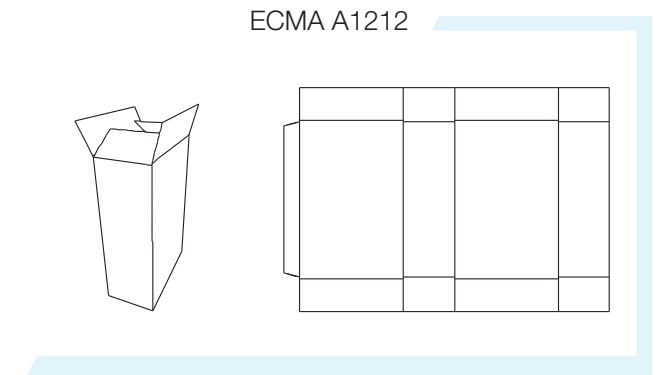
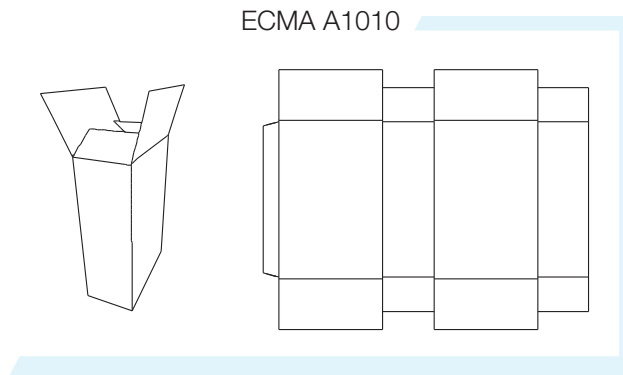
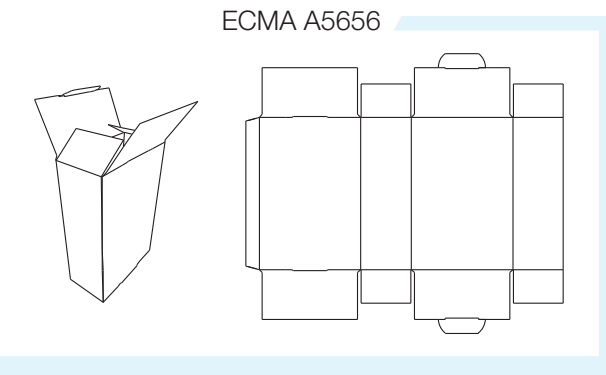
Tray box is used for products like honey, jam, beverage and conserved food offered in the glass jar or bottle.

*Tava tipi kutu, bal, reçel, konserve, içecek gibi cam kavanozda ve şişede sunulan ürünlerin içine konulduğu kutu modelidir.*



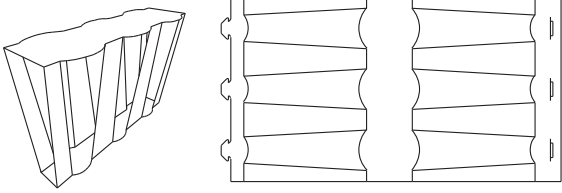
Standard box is one of the most used box models. It is also called a-type box.

*Standart kutu, en çok tercih edilen kutu modellerinden biridir. Standart kutu, A box kutu olarak da isimlendirilir.*

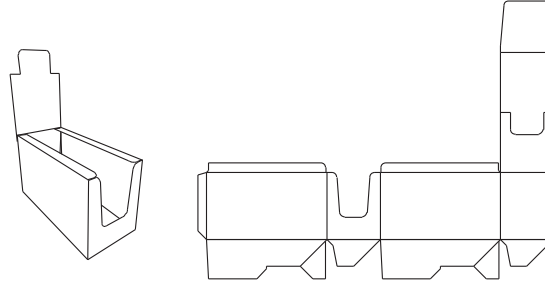


Special boxes are box models produced in accordance with customers' needs and different from usual box models.  
Özel kutular, müşteri ihtiyaçları doğrultusunda klasik kutu modellerinden farklı olarak üretilen kutu çeşitleridir.

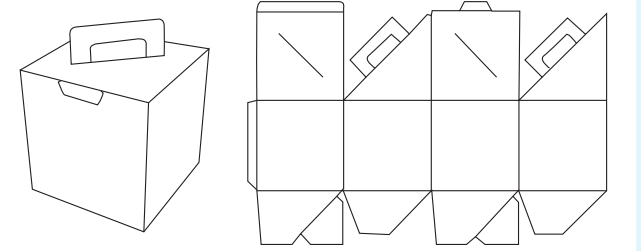
ECMA B1021



ECMA FC0602



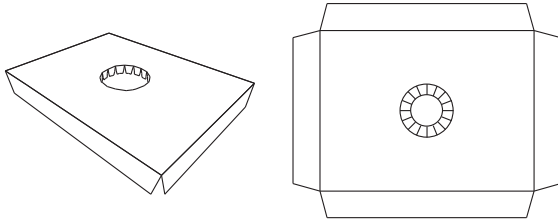
PS 1000



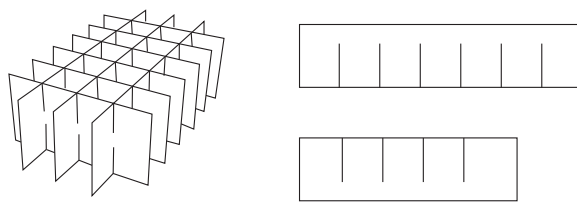
Separators are used for products in the box to protect by cushioning and keep them from moving.

Seperatör, kutu içerisindeki ürünleri ayırtırmak, ürünlerin birbirlerine temas etmesini önlemek ve sabit durmasını sağlamak için kullanılır.

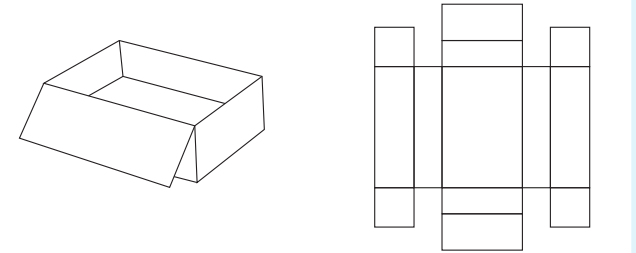
ECMA F8003



ECMA F8031



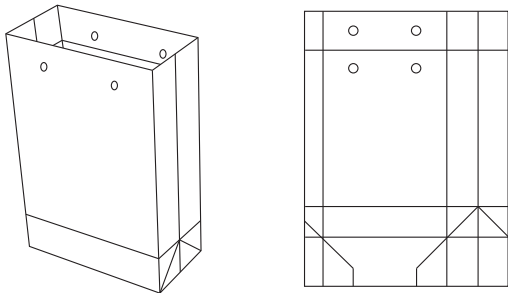
ECMA B8003b



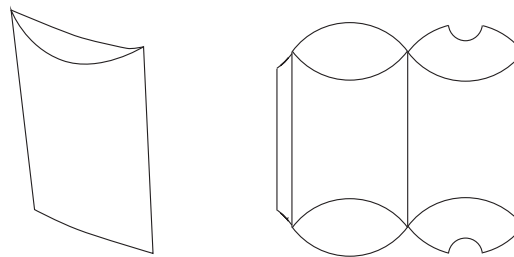
Carton bags which are indispensable for retail industry are essential tools to carry purchased products easily.

Özellikle perakende sektörü için vazgeçilmez olan karton çantalar, alınan ürünün rahat taşınması için önemli araçlardır.

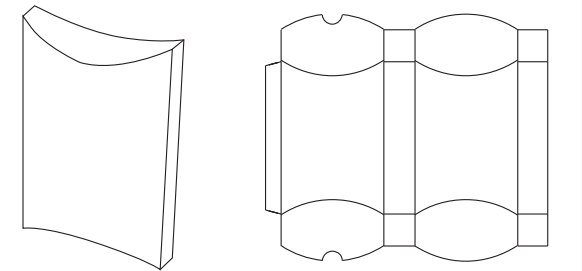
PCB 1000



ECMA F7001a



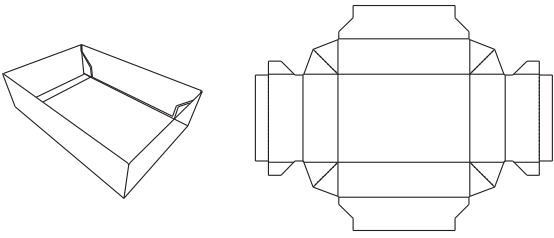
ECMA F7001b



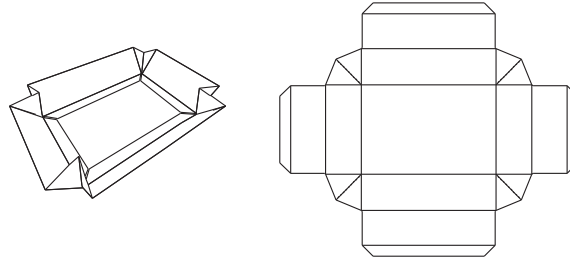
Shirt boxes which made of cardboards or cartons are produced as two separate pieces (box itself and lid).

Gömlek kutuları, 2 parça olarak (kutu ve kapak) üretilmekte olup mukavva veya karton gibi farklı malzemelerden yapılmaktadır.

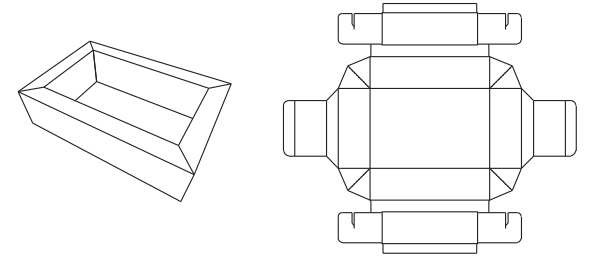
ECMA B1021



ECMA B1011



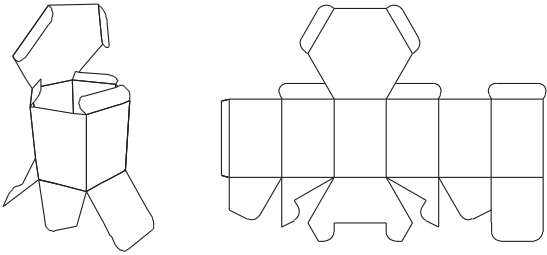
ECMA B1411



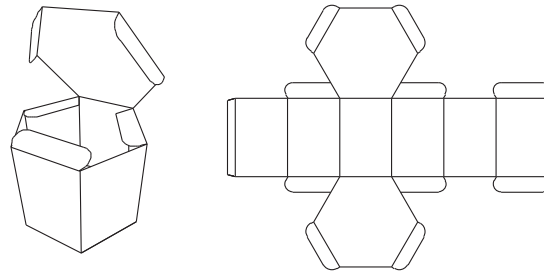
Polygonal box is the box type with different numbers of sides in contradistinction to classical box with four sides.

Çokgen kutu, klasik 4 kenarlı kutulardan farklı kenar sayısına sahip olan kutu tipidir.

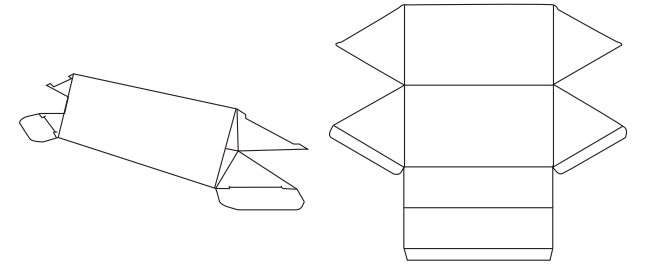
ECMA B4055



ECMA B4020



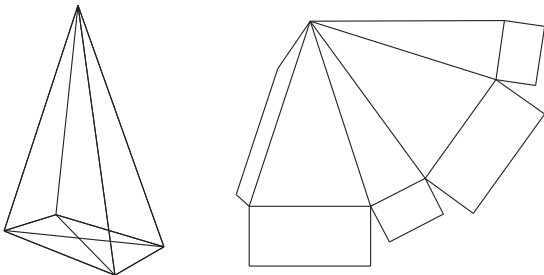
ECMA C1020



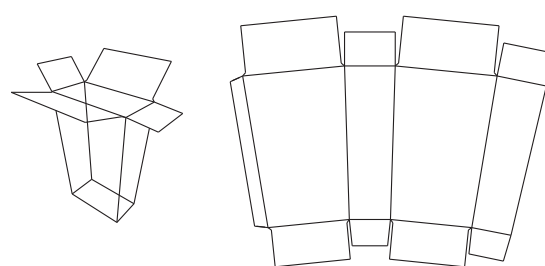
Angled box is the box model which has sloped shape in contradistinction to conventional box models.

Açılı kutu, klasik kutu modellerinden farklı olarak eğimli şekle sahip kutu modelidir.

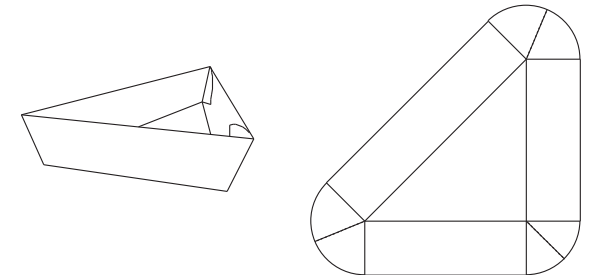
ECMA C2210



ECMA C2110



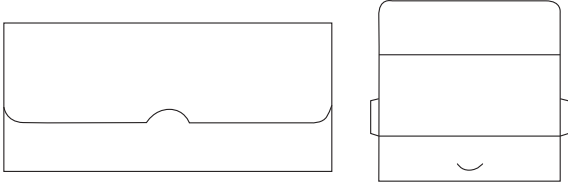
ECMA D1011



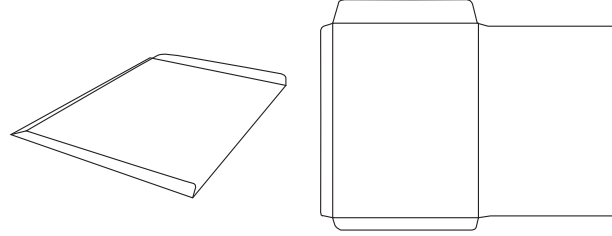
Envelope is one of the most important printed corporate identity materials.

Zarf, kurumsal kimliğin en önemli baskılı materyallerinden biridir.

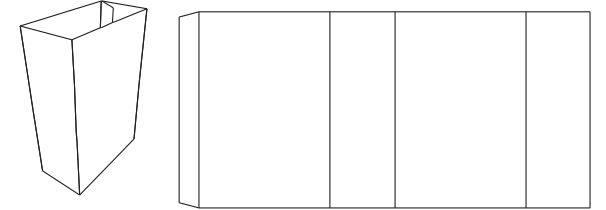
ECMA F6093a



ECMA F6093b



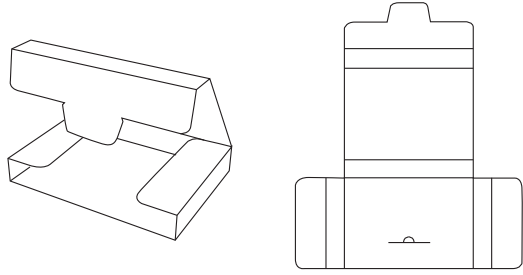
ECMA A0101



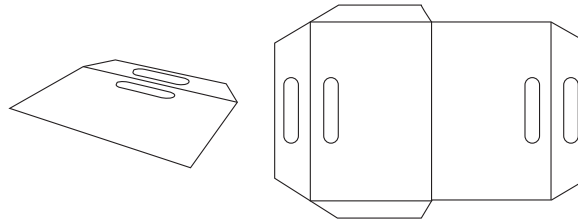
Folder is one of basic printed corporate identity materials.

Dosya, kurumsal kimliğin temel baskılı materyallerinden biridir.

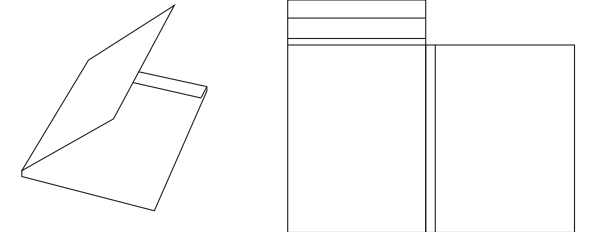
ECMA E4082



ECMA F7011



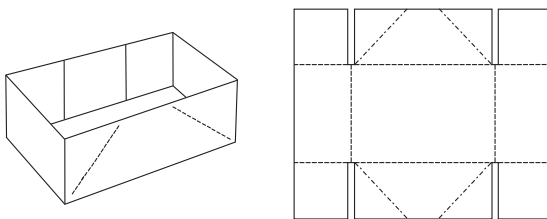
PF1000



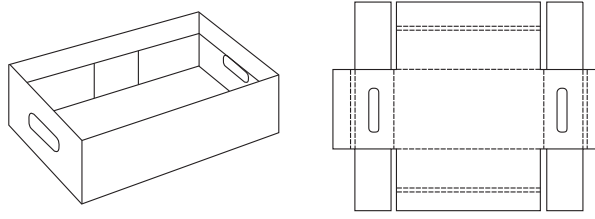
Tray box is used for products like honey, jam, beverage and conserved food offered in the glass jar or bottle.

Tava tipi kutu, bal, reçel, konserve, içecek gibi cam kavanozda ve şişede sunulan ürünlerin içine konulduğu kutu modelidir.

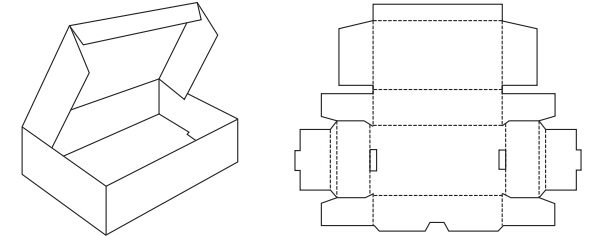
FEFCO 0451



FEFCO 0430



FEFCO 0429



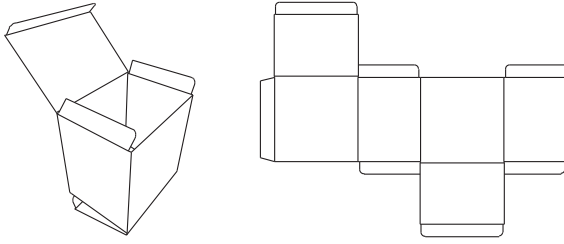
Corrugated cardboards / Oluklu mukavvalar

Tuck end boxes / İlaç tipi kutular

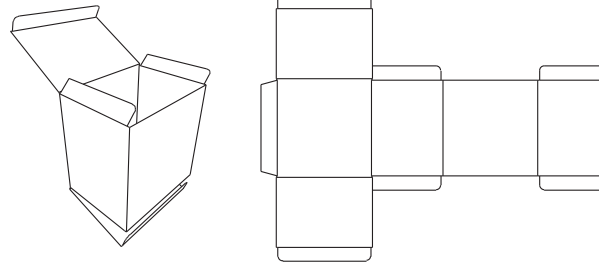
Tuck end box is the box model which enables to open and close easily and smoothly because it has double flaps.

İlaç tipi kutu, çift kapaklı olması nedeniyle rahat ve kolay açılıp kapanma olanağı sunan kutu modelidir.

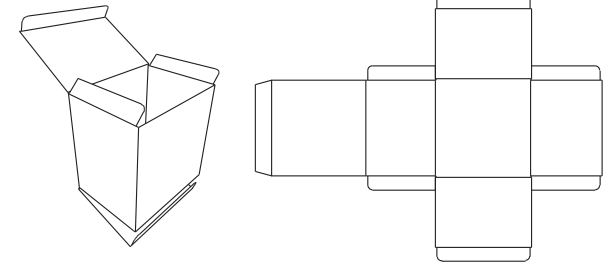
FEFCO 0211



FEFCO 0210a



FEFCO 0210b



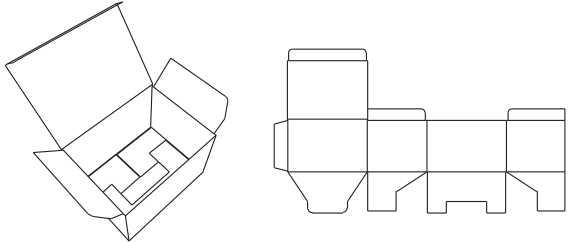
Corrugated cardboards / Oluklu mukavvalar

Snap lock boxes / Dip kilit kutular

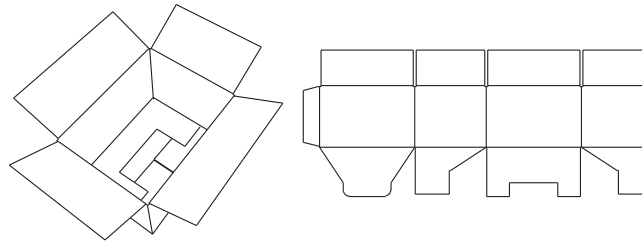
Snap lock box is the box model with lock system to set up manually.

Dip kilit kutu, manuel (elle) kurumu yapılan kilit sistemli kutu modelidir.

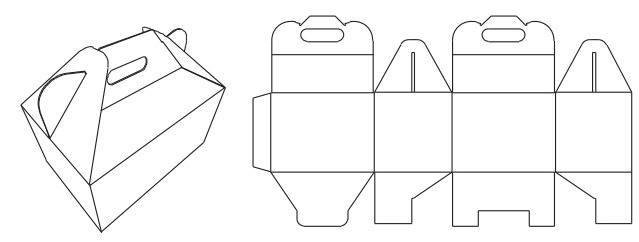
FEFCO 0215



FEFCO 0216



FEFCO 0217



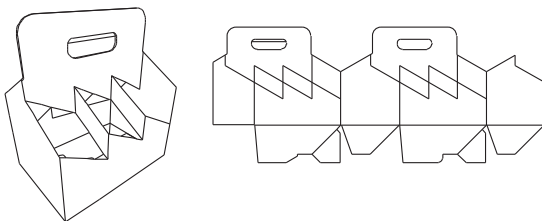
Corrugated cardboards / Oluklu mukavvalar

Tuck top auto bottom boxes / Dip kilit yapıştırmalı kutular

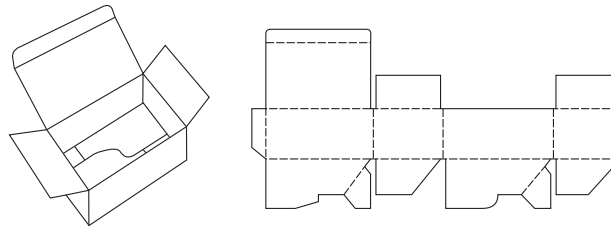
Tuck top auto bottom box is delivered to the customer the way that bottom end is glued and folded. It is already setup and ready to use when unfolded.

Dip kilit yapıştırmalı kutu, tabanı yapıştırılmış ve katlanmış şekilde kullanıcıya ulaşan ve açıldığında otomatik olarak kurulan kutu modelidir.

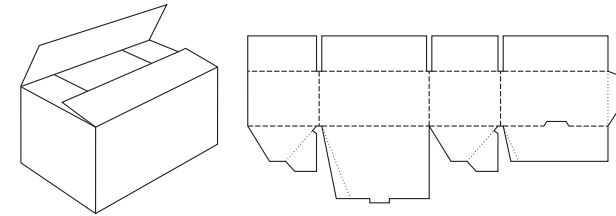
FEFCO 0717



FEFCO 0713



FEFCO 0701

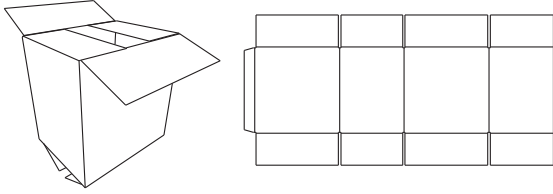




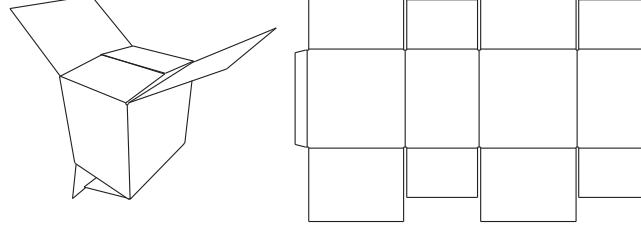
Standard box is one of the most used box models. It is also called a-type box.

Standart kutu, en çok tercih edilen kutu modellerinden biridir. Standart kutu, A box kutu olarak da isimlendirilir.

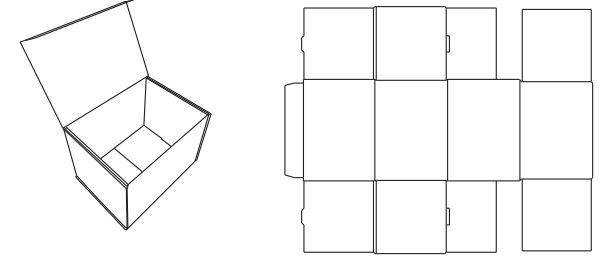
FEFCO 0201



FEFCO 0206



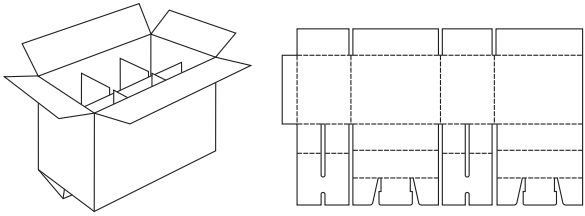
FEFCO 0407



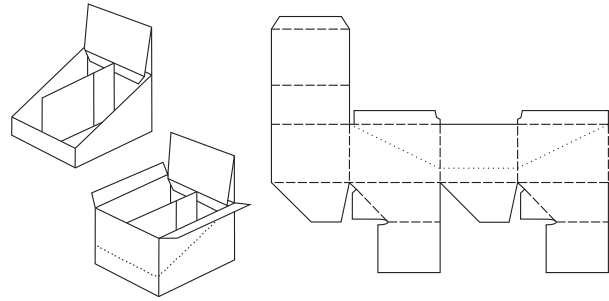
Exclusive boxes are box models produced in accordance with customers needs and differently from usual box models.

Özel kutular, müşteri ihtiyaçları doğrultusunda klasik kutu modellerinden farklı olarak üretilen kutu çeşitleridir.

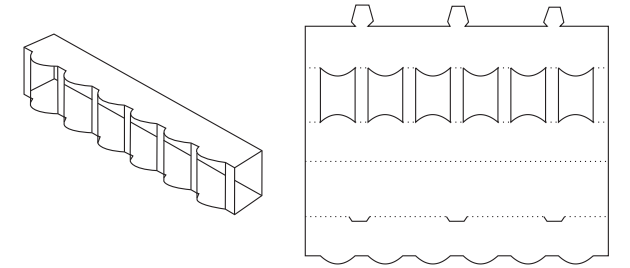
FEFCO 0207



FEFCO 0716



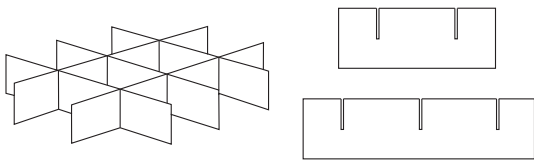
FEFCO 0752



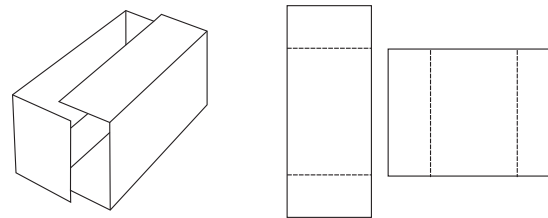
Separators are used for products in the box to protect by cushioning and keep them from moving.

Seperatör, kutu içerisindeki ürünleri ayırtırmak, ürünlerin birbirlerine temas etmesini önlemek ve sabit durmasını sağlamak için kullanılır.

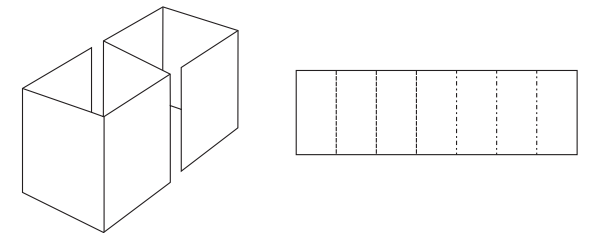
FEFCO 0933



FEFCO 0929



FEFCO 0921



**Oran-by**

Remstalstraße 47  
D-71686 Remseck am Neckar  
www.oran-by.de  
info@oran-by.de

Tel: +49/ 7146-93 988 (43) Fax:(45)  
Mobil: +49/ 173-82 999 59



**PATROL MATBAACILIK TİC. LTD. ŞTİ.**  
Güllübağlar Mah. Yaşar Doğu Cad.  
No:3 Pendik/İSTANBUL  
Phone: +90 216 307 55 00 /  
+90 533 392 63 41/+90 216) 307 44 54  
E-Mail: www.patrol.com.tr